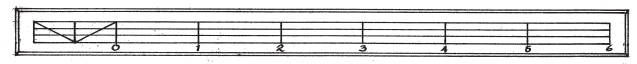
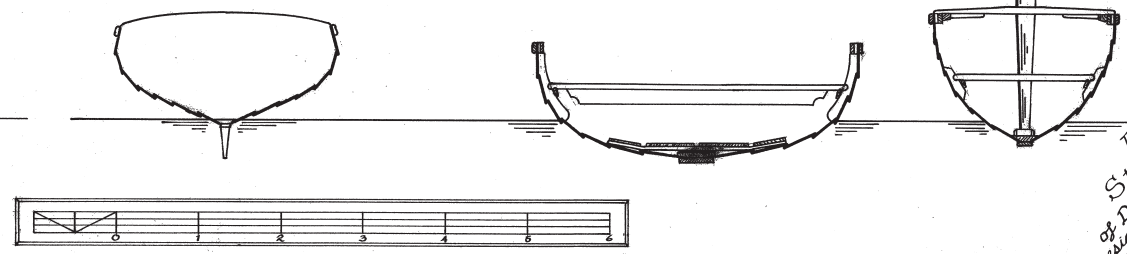
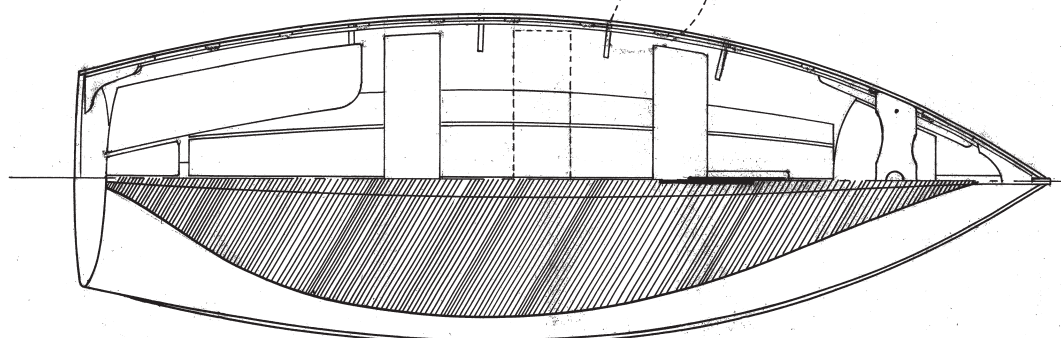
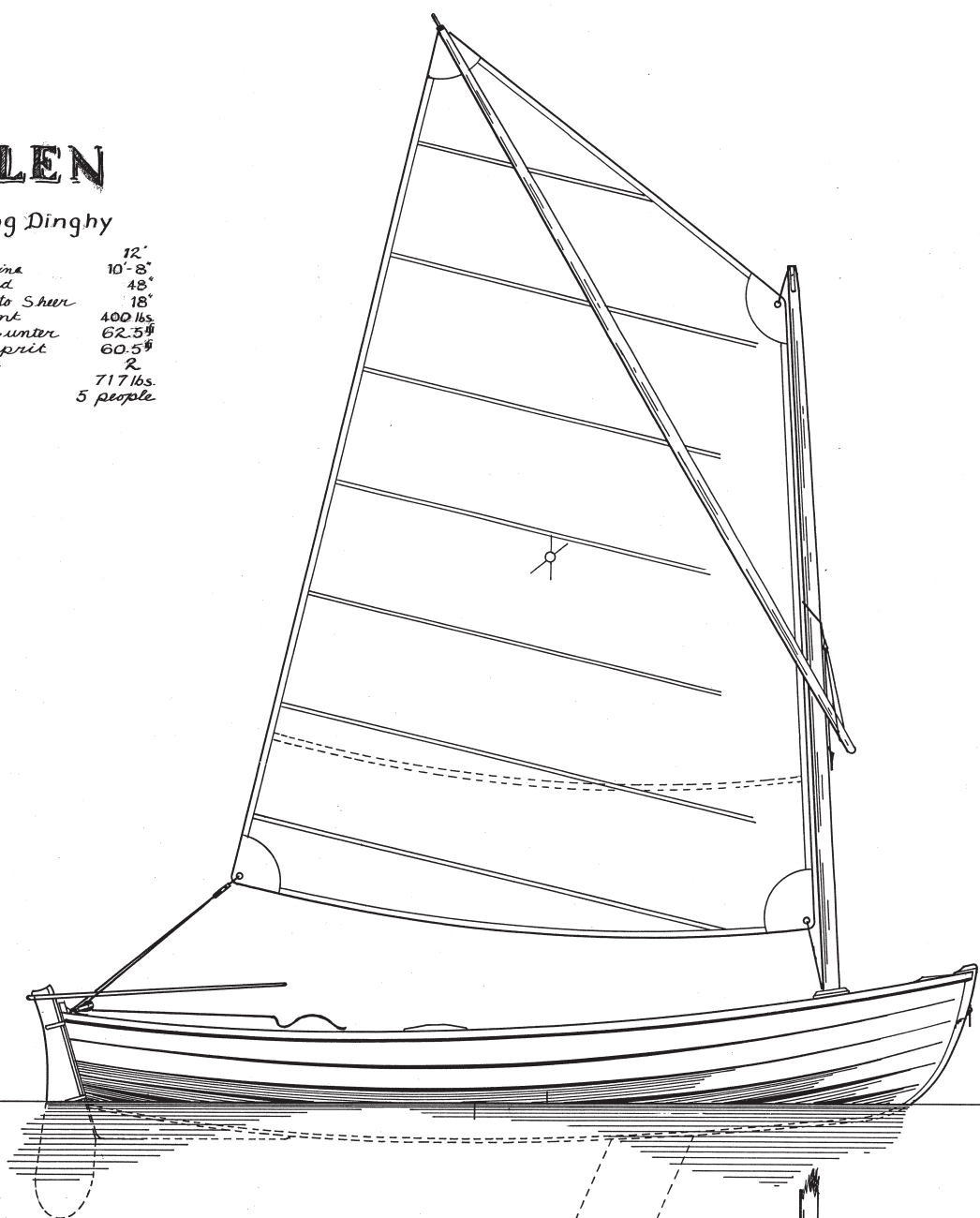
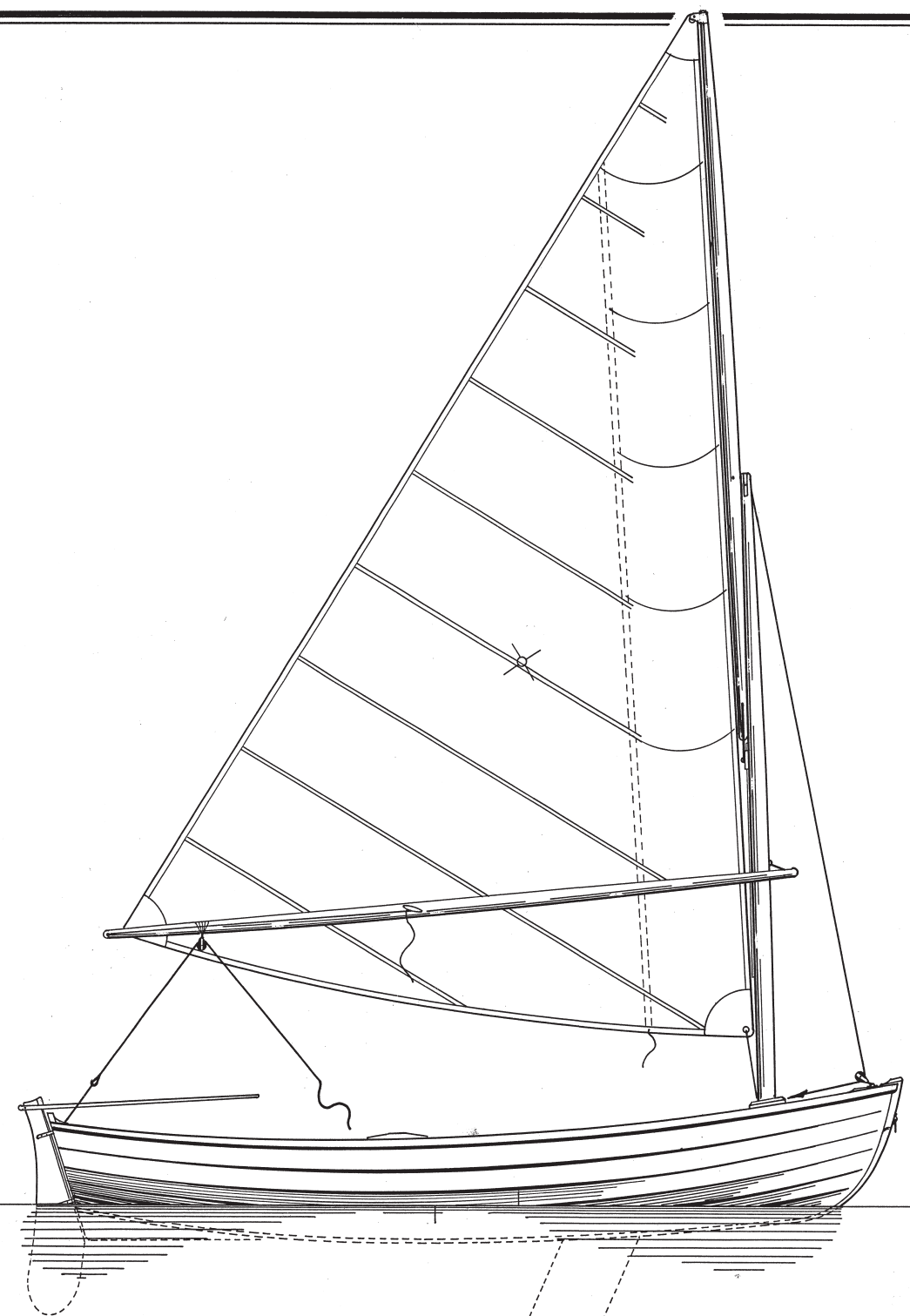


ELLEN

A Sailing Dinghy

Length	12'
Drawn Waterline	10'-8"
Beam, Molded	48"
Depth - Keel to Sheer	18"
Displacement	400 lbs.
Sail Area, Gunter	62.5 ^{sq}
Sprit	60.5 ^{sq}
Horsepower	2
Capacity	717 lbs. 5 people



*This is a
Study Plan
of Design Number 27
Designed by John Brooks
of Mount Desert, Maine
in February of 1992*



John Brooks
Brooks Boats Designs
 831 Reach Road
 Brooklin, Maine 04616
 207-359-2491
www.brooksboatsdesigns.com